

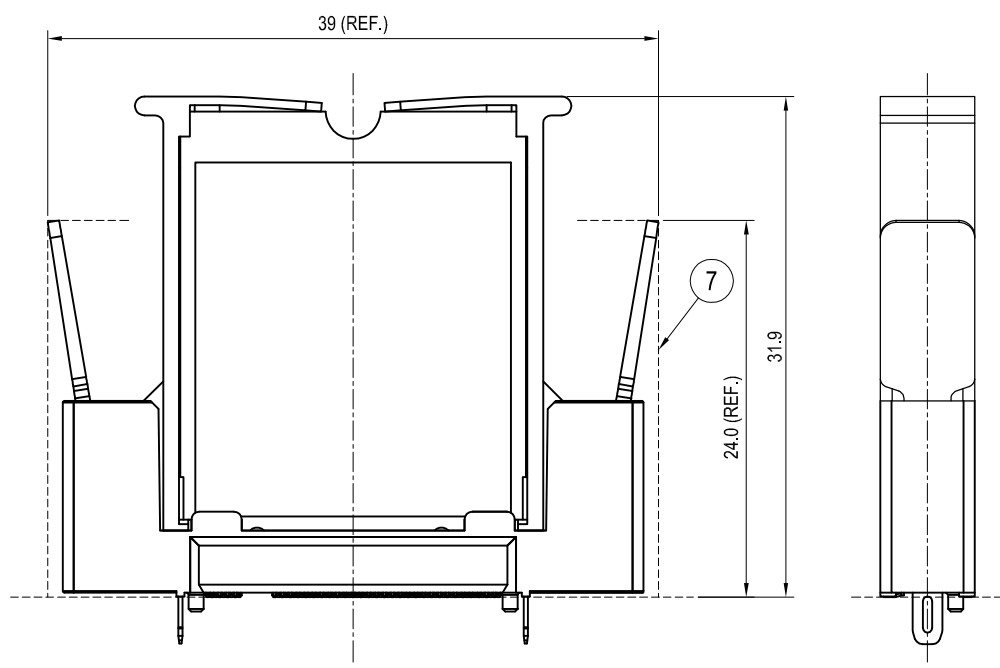
NOTES:

- MATERIAL:
  - HOUSING: THERMOPLASTIC, HIGH TEMP., UL94V-0; COLOR:BLACK.
  - CONTACT: COPPER ALLOY
  - FITTING NAIL: COPPER ALLOY
- FINISH:
  - CONTACT:
    - CONTACT:SEE ORDER INFORMATION.
    - 100-200u" MATT TIN PLAING ON SOLDER.
    - 50-100u" NICKEL UNDERPLATED OVERALL.
  - FITTING NAIL:
    - 100-200u" MATT TIN PLAING ON SOLDER.
    - 50-100u" NICKEL UNDERPLATED OVERALL.
- REFLOW SOLDER CAPABLE TO 260°C PER ACES SPEC.
- SPEC. PLS. REFER TO PS-51765-XXXX-XXX
- PACKAGE PLS. REFER TO
  - 51765-0752X-XXX REFER TO 51765-XXXX-001-TRAY
  - 51765-0750X-XXX REFER TO 51765-xxxx-xx-TRP
- CARD SLOT ACCEPTS 0.8±0.08mm MODULE THICKNESS (MEASURED OVER P.C. PADS).
- KEEP OUT ZONE RESERVED FOR LATCH.
- KEEP OUT AREA IS THE AREA WHERE THE CONNECTOR (INCLUDES LATCHES IN OPENING POSITION) IS MOUNTED ON THE PCB.
- PART NUMBER
 

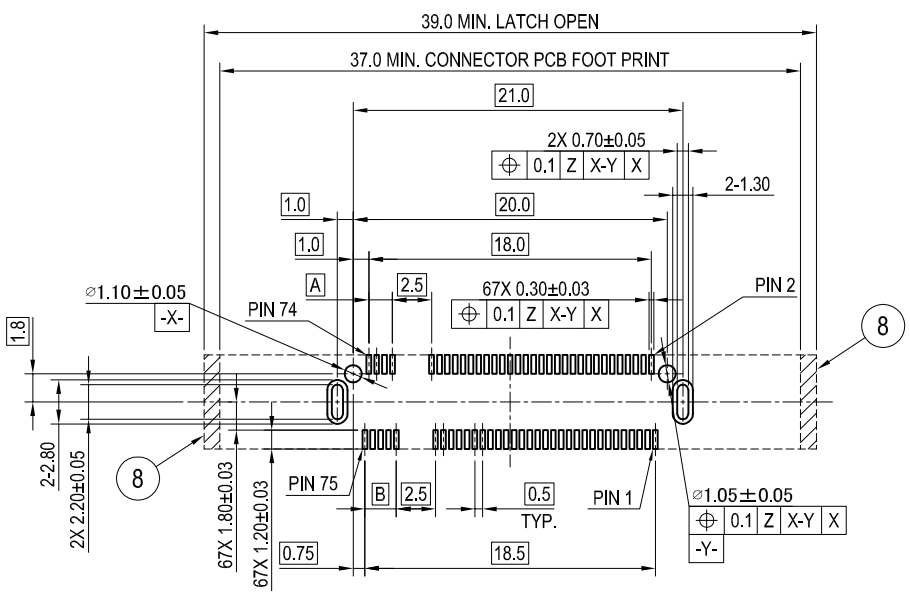
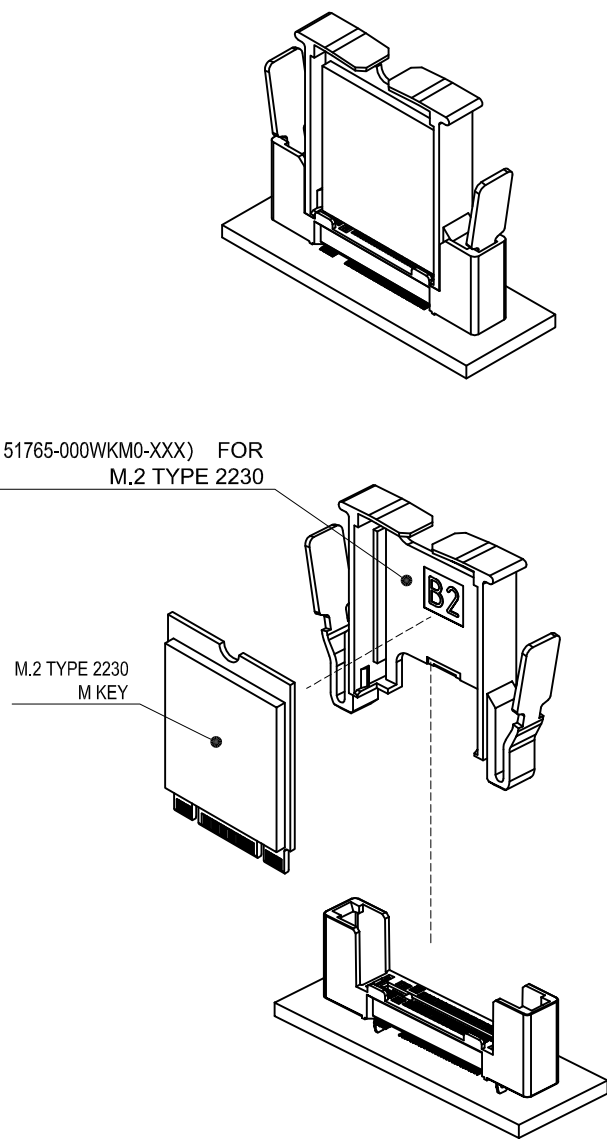
51765- XXX X X - XXX		
NO OF CKT	KEY TYPE	
075.CKT	001: KEY A	
	:	
PACKING	012: KEY M	
0: Tape & Reel		
2: TRAY		
	PLATING	
	C: GOLD 15 μ" ON CONTACT AREA	
	100-200u" MATT TIN PLAING ON SOLDER.	

KEYING OPTION	DIM A	DIM B
M	1.5	2.00

QUALITY SYMBOLS MAJOR Ⓢ CRITICAL Ⓢ GENERAL TOLERANCES (UNLESS SPECIFIED) X. ±0.5 .X ±0.25 .XX ±0.15 .XXX ±0.1 ANGLES ±2°	DRAWN BY	DATE	
	LiuHua	21/12/23	
	CHECKED BY	DATE	TITLE
	XuZhiYong	21/12/23	0.5mm PITCH M.2 LATCH CONN. SMT D/R S/T TYPE H=12.5mm
UNITS	SCALE	SIZE	DWG NO.
mm	1:1	A4	N/A
SHEET NO.	REV	PART NO.	
1 OF 2		51765-075XX-XXX	



FRAME (51765-000WKM0-XXX) FOR M.2 TYPE 2230



DATUM Z IS THE PCB SOLDER SURFACE

**RECOMMENDED P.C.B LAYOUT**

TOLERANCE=±0.05mm

<b>QUALITY SYMBOLS</b> MAJOR Ⓢ CRITICAL Ⓢ	DRAWN BY	DATE	
	LiuHua	21/12/23	
<b>GENERAL TOLERANCES (UNLESS SPECIFIED)</b> X. ±0.5 .X ±0.25 .XX ±0.15 .XXX ±0.1 ANGLES ±2°	CHECKED BY	DATE	<b>TITLE</b> 0.5mm PITCH M.2 LATCH CONN. SMT D/R S/T TYPE H=12.5mm
	APPROVED BY	DATE	<b>DWG NO.</b> N/A
	XuZhiYong	21/12/23	
	UNITS		<b>SIZE</b> A4
	SCALE	1 : 1	
	SHEET NO.	2 OF 2	<b>REV</b> B
			<b>PART NO.</b> 51765-075XX-XXX